

**Basement  
Living Room**

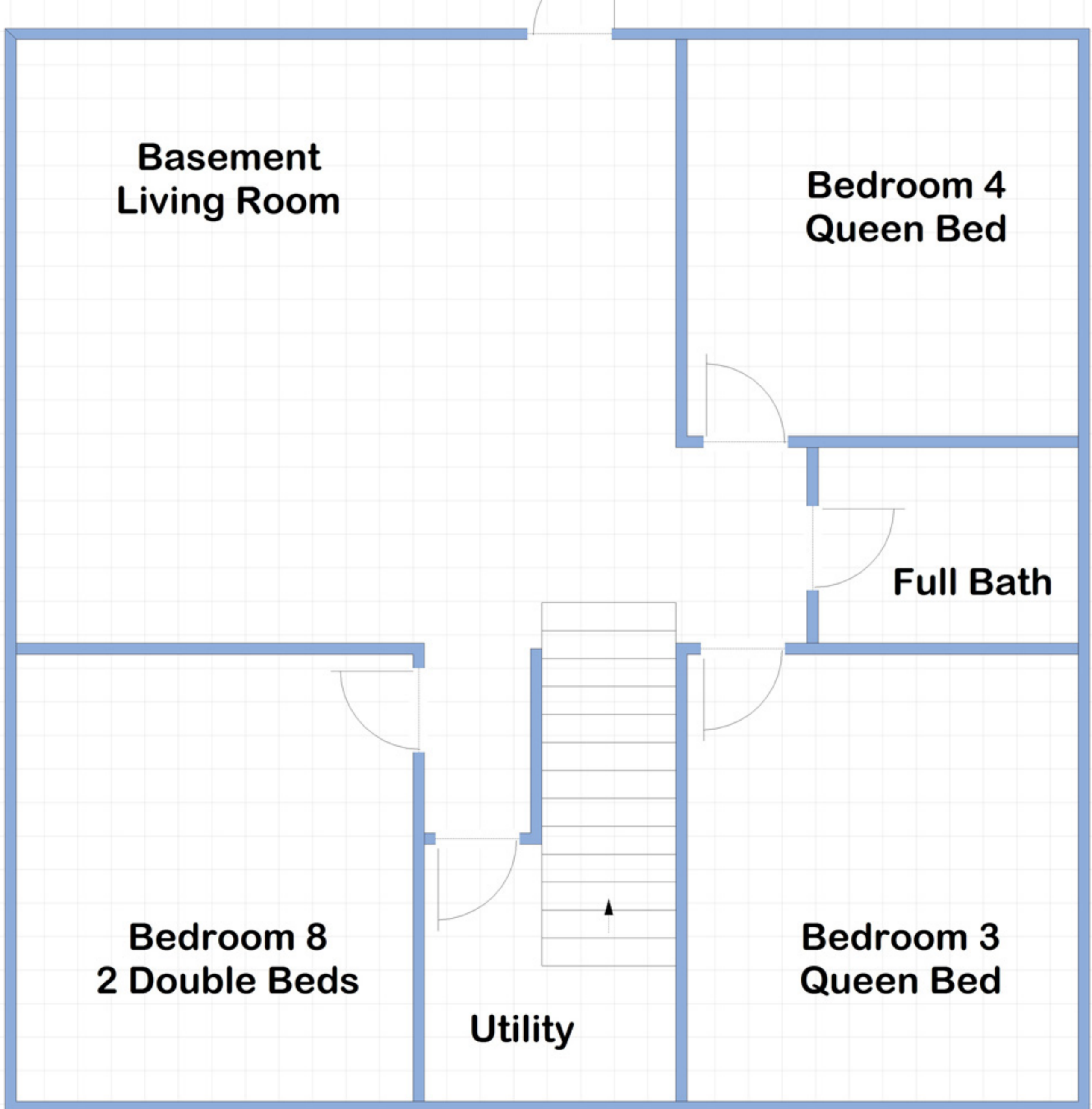
**Bedroom 4  
Queen Bed**

**Full Bath**

**Bedroom 8  
2 Double Beds**

**Utility**

**Bedroom 3  
Queen Bed**



Screen Porch

Gas Fireplace

Bedroom 1  
Queen Bed

DECK

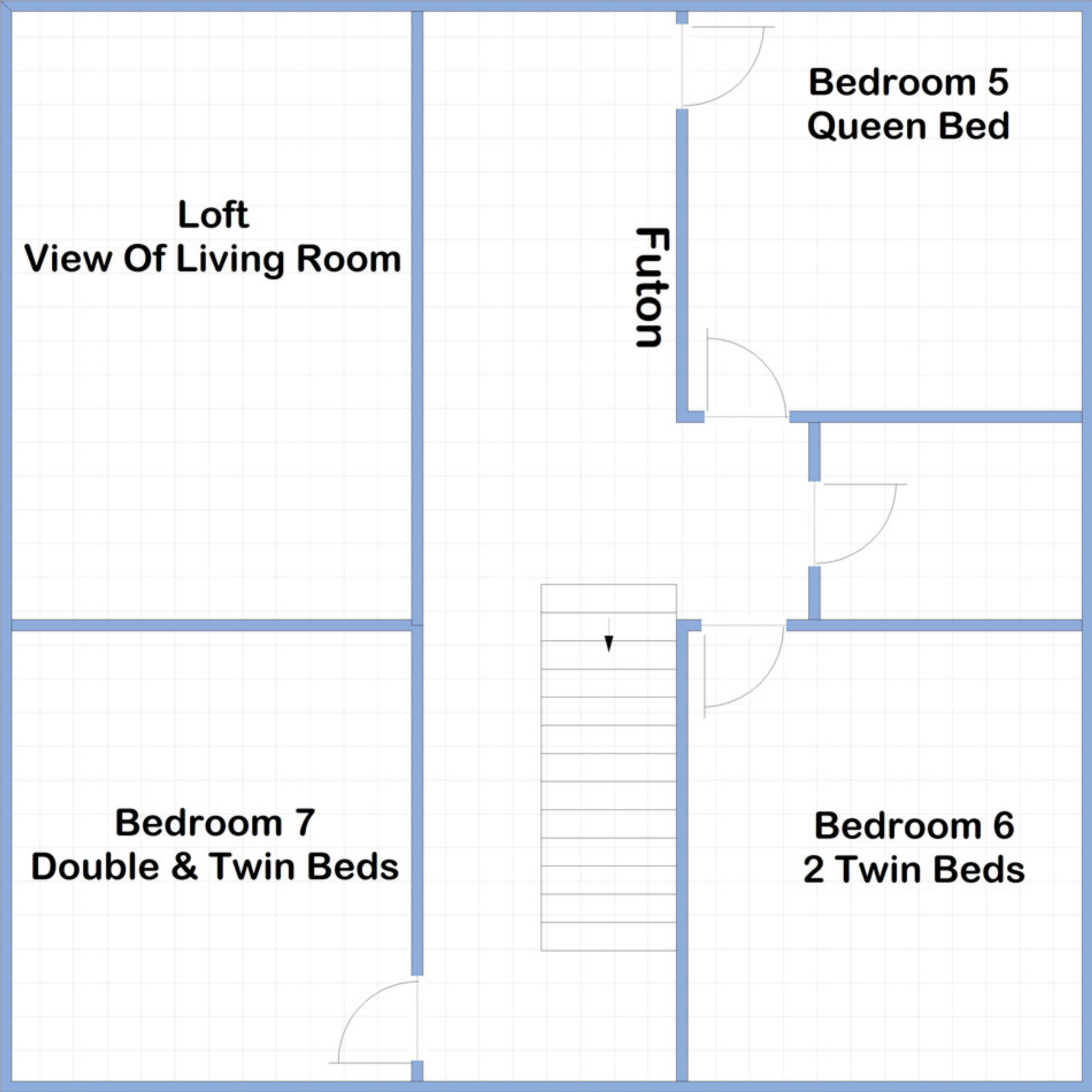
Full Bath

Kitchen



Bedroom 2  
Queen Bed

DECK



**Loft  
View Of Living Room**

**Bedroom 5  
Queen Bed**

**Futon**

**Bedroom 7  
Double & Twin Beds**

**Bedroom 6  
2 Twin Beds**